

## Integrated Vehicle Tracker (Model: F8)

F8 gives connectivity & ability to remotely control an array of devices. It is suitable for taxi, logistics vehicle, bus, and company cabs. Besides having all standard vehicle tracker features, it provides:

- Sturdy Metal body
- Blind area compensation
- Internal Battery Back Up
- Phone Functions
- Two-way Messaging
- Alarm for SOS, Speed, Tiredness, Geofence, etc.
- Several I/O for remote monitor & control
- Track on Demand (SMS)/Live Web based Tracking
- Customized Reports



### It seamlessly connects to:

- Headset (for voice com.)
- Microphone (for voice com.)
- LCD dispatch screen (for data com.)
- Camera (for live pics online)
- Fuel Monitoring
- LED display (for advertising/info)



## Web based GPS tracking software Platform

Our web based platform offers full-fledged tracking service helping you take complete control of your mobile assets/fleet. We offer a complete ACCOUNT MANAGEMENT PORTAL to you, while entire back office services such as server, software, etc. are taken care by us. Our tracking software delivers savings & results immediately & efficiently.

### Features

- **Map** : Track live on Nationwide map.
- **Tracking** : Single or Multiple Vehicles/2way GPRS Messaging
- **Replay A Day** : With Date Selection
- **Alerts** : Geo-fence, Low Battery, SOS
- **Reports** : Activity Reports, Over Speed, Customer Site, Stop, Geofence, Trip, Idle, Speed, Mileage, Driving Time, Service History, Route Optimization, Fuel Monitoring, Trip Report, Weight Sensor, etc.

### Notifications

- **Geo-fencing** : Be notified of out of authorized zones
- **Speed** : Be Notified of pre-defined speeding
- **Low Voltage** : Be warned of low voltage
- **Controllable Inputs** : Digital Inputs for Ignition trigger, Alarm Triggers, etc. & Analogue inputs for optional temp. sensing, weight, fuel level metering, etc.

## Passenger Information System

The company delivers & does System Integration of not only small GPS/GPRS based Tracking systems but also large Private & Public Passenger Information Systems (PIS) being used by mass public transport such as buses & taxis. Our PIS includes:

- Integrated Controller
- LED Display on board & on bus-stand
- Voice Announcement System
- GPS/GPRS based Vehicle Tracking System
- Mobile CCTV
- Electronic Ticketing Machine
- Control Center



The system is proven solutions for buses, taxis, stations and timetable management provide intuitive real-time insight into the status of routes in progress – just what you need to improve the timeliness and efficiency of daily operations. All features have been designed with utmost care for quick, intuitive and visually user-friendly use, so you can take action quicker. Further more we have DEPOT MANAGEMENT SYSTEM to give you an unparalleled PIS solution for transport companies.



**GTI Infotel**

150, Pocket-1, Jasola Vihar, New Delhi-110025  
INDIA. Ph: +91-99900-20250, Fax:011-4052-6858  
Email: info@gtiinfotel.com | [www.gtiinfotel.com](http://www.gtiinfotel.com)



**GTI Infotel**

**SMART TRACKING SYSTEM**

GPS/GSM/GPRS Tracking Solutions

Fleet Management

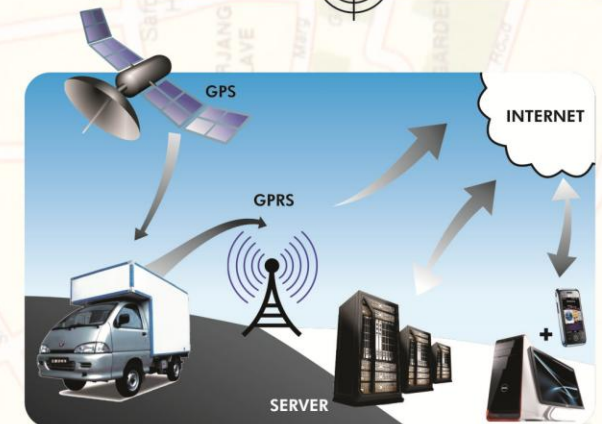
Personal & Asset Tracking

Passenger Information System

Personal & Asset Tracking

Location based Advertisement

Public & Private Transport Management



How does a GPS based tracker work?

<http://www.gtiinfotel.com>



## GPS TRACKING SYSTEM

Our company has been involved in wireless telecommunication industry for over a decade. We bring you a complete range of GPS & GSM/GPRS based tracking devices after years of R&D and association with some of the top names in the GPS tracking industry worldwide. Our models range from a simple GPS logger to a much complex Vehicle Tracking System. Our web based GPS tracking software delivers the mapping application and reports on your finger tips online or on your mobile phone.

### GPS Data Logger (Model: GL-100)

An advanced GPS data logger with host of features:

- SiRF Star III Chipset
- LCD Display
- Electronic Compass
- Barometer & Altimeter
- Thermometer
- Speedometer Display
- Directional Navigation
- POI Input setting
- PC Connectivity
- User friendly windows based software
- Channels: 20
- Long life rechargeable Lithium-Ion Battery



### GPS Receiver & Logger (Model: BBPT)

A combination of GPS receiver and a data logger with **Bluetooth**:

- SiRF Star III chipset
- Preset saving intervals
- Configuration wizard
- Windows based SW utility
- Channels: 20
- Export to KML, CSV, RMC, GPS, etc.
- Built-in rechargeable Battery with long life



### GPS/GPRS Personal Tracker (Model: PT)

The personal tracker is compact, portable and stylish in design with GPS/GSM/GPRS wireless network, with built-in memory. It allows you to record up to 150,000 positions data

- 2 way voice communication
- Channels : 32
- SOS for Emergency Action
- Low Power Alarm by SMS/GPRS
- Vibrator Function
- Voice Monitor Function
- Inbuilt GPS and GSM Antennas
- Can Be use as Data Logger
- No monthly tracking fees (if used only as SMS/Datalogger)
- Easily Configured remotely (SMS/GPRS) or USB
- Track on demand (SMS)/ or on our Live Web Based tracking software
- Certification: CE, FCC, RoHS, PTCB



### GPS/GPRS Tracker with Magnetic Mount Box & Extra long life Battery (Model: 911)

A stealthy portable device with ultra high sensitive GPS & GSM components for application such as anti-theft, container monitoring, law enforcement (Police) & asset monitoring.

- Internal Extra powerful GPS & GPRS Antenna
- Rechargeable Li-ion Long Life Battery (up to 30 days)
- Set Pack Magnetic Mount Box
- No Installation Required
- Weather Proof
- USB Connectivity
- Geo Fence Capability
- Mileage, Speed, Direction
- Up to 100,000 Data Logged Capability
- Real Time Dynamic Monitoring on our web based software
- Certification: CE, FCC, RoHS



### Vehicle Tracker (Model: VT)

The VT is a Basic GPS vehicle tracking device that is quick to install & is ideal vehicle tracking & security device.

- Compact Size
- Motion Sensor Built In
- Internal Battery Back Up
- SOS, Geofence, etc. Alarm
- 2 Inputs & 2 Outputs
- Internal GSM & External GPS Antenna
- Track on Demand or on our Live Web based Tracking software
- Remotely Controllable output to disable vehicle By SMS
- Various customized reports
- Certification: CE, FCC, RoHS



### Advanced Vehicle Tracker (Model: FM)

The advanced FM is a GPS vehicle tracking device, ideal for fleet Management and commercial data centres.

- Easily programmable for specific requirement
- Internal Battery Back Up
- Motion Sensor Built In
- Geo Fence
- SOS Panic button/alarm
- Fuel Monitoring
- Easily programmable remotely
- Track on Demand (SMS) or on our Live Web based Tracking software
- 5 Inputs and 7 Outputs remotely Monitored & controlled
- Single/Multiple Vehicle tracking with 2 way GPRS messaging
- Various customized reports
- Certification: CE, FCC, RoHS



**plus all GARMIN®**  
GPS handheld Products Available!

Mobile asset tracking  
**Made simple!**



# Consignment Tracking & Management System (CTMS) For Distillery/Liquor Industry



## GPS Tracking Specialists

**REDUCE** Labour, fuel, vehicle & management.

**INCREASE** productivity, safety & revenue

**IMPROVE** your customer satisfaction & your bottom line



GTI is a pioneer in developing & deploying GPS based CTMS system for the distillery / Liquor Industry. It provides end-to-end solution including manpower so that clients are free from any technological & logistics hassles. GTI's solution is catering to thousands of trucks across several states & Industries.

The CTMS solution developed specifically for the Liquor Industry focuses on providing ultra-modern client specific solution adhering to the needs of Excise at the right price point.

### Real-Time GPS Tracking



### Statutory Obligations of Distilleries / Bottlers

(Irrespective of compulsory tracking is enforced or not) :

- Follow the prescribed routes/Check post, without any diversion.
- Adhere to transit time prescribed by Excise.
- In case of any partial or total loss in transit, penal Excise Duty is charged from Selling Distillery/Bottler,
  - Which is many times of cost of goods
  - Revenue loss on each shipment is to the company as well as the Excise Department.
  - Heavy penalties are levied with onus on the Seller.
- Distillery/Bottler to exercise control on movement of goods in transit and provide better customer Service.
- In case of any genuine need, mechanical failure or traffic diversion, Seller can make alternate arrangements.
- Facilitates better Management control.
- Transparency in operation, logistics & generation of tax revenues.

### Compulsory Tracking & requirements by Excise Dept.

- GPS devices to be installed in all vehicles.
- Only Vehicles with GPS devices will be given exit permission.
- Control room with 24x7 manpower to monitor the Trucks in transit.
- Information about any exception to be immediately given to :
  - Company's Manager &
  - Excise Department
- Action to be taken on the aforesaid exception in real time.

### Other data maintained by GTI CTMS Software

- Transporter details.
- Driver details.
- Vehicle's Registration details.
- Route details.
- Approved Vs. Actual Time taken & distance covered by the Vehicle.
- Route deviations & much more.

## GTI's CTMS Solution Vs. GPS Tracking provided by Transporters

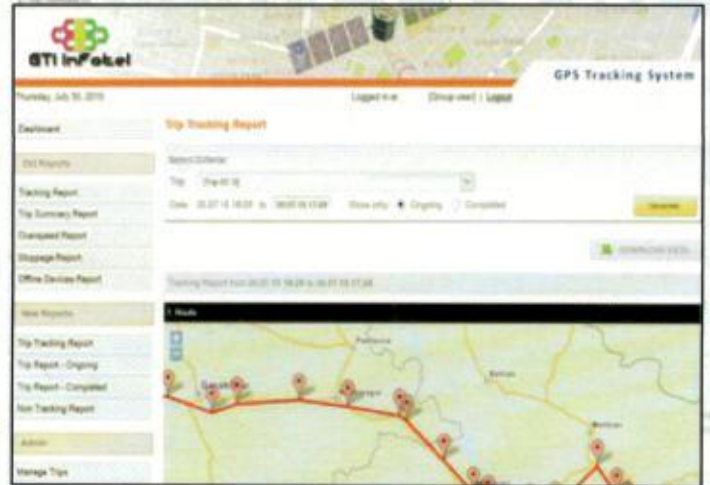
S.No.	Features	GTI's CTMS	Transporter GPS
1.	On Demand 24x7 Tracking	Yes	No
2.	Distiller Specific "Trip" Generation & Retrieval	Yes	No
3.	Distiller Specific Alerts & Reports	Yes	No
4.	Historical reports	Yes	No
5.	Works on Any market Vehicles	Yes	Transporter Dependent
6.	Accuracy & trust (being independent party)	Yes	No
7.	Business Analytics	Yes	No



## GTI's CTMS Features

### GTI's CTMS Features :

- End-to-end solution with manpower being supplied by GTI & responsible to pick up the GPS device from the Destination/Depot back to the Origination/Factory.
- System works on any market Vehicles.
- No Capital Expenditure by the Clients.
- No reliance on transporter to fix a GPS device.
- Track without Transporter involvement.
- Real-time location.
- Small & Intelligent GPS tracking device with long Lasting Battery.
- Cloud based Application.
- Option to take out multiple Alerts & Reports.



Time	Lat-Lon	Altitude	Location	Speed	Direction	Remarks
194	29-27-20.00, 75-59-50	Location	52.832	1,254.40	150	150-Mph-Front-Range, Karnataka, Mysore, India
195	29-27-20.00, 75-59-50	Location	0	1,257.40	150	150-Mph-Front-Range, Karnataka, Mysore, India
196	29-27-20.00, 75-59-50	Location	52.834	1,261.50	150	150-Mph-Front-Range, Karnataka, Mysore, India
197	29-27-20.00, 75-59-50	Location	9.04	1,260.60	150	150-Mph-Front-Range, Karnataka, Mysore, India
198	29-27-20.00, 75-59-50	Location	9.865	1,259.24	150	150-Mph-Front-Range, Karnataka, Mysore, India
199	29-27-20.00, 75-59-50	Location	26.214	1,274.70	150	150-Mph-Front-Range, Karnataka, Mysore, India
200	29-27-20.00, 75-59-50	Location	27.000	1,275.00	150	150-Mph-Front-Range, Karnataka, Mysore, India
201	29-27-20.00, 75-59-50	Location	24.852	1,252.20	150	150-Mph-Front-Range, Karnataka, Mysore, India
202	29-27-20.00, 75-59-50	Location	0	1,255.34	150	150-Mph-Front-Range, Karnataka, Mysore, India
203	29-27-20.00, 75-59-50	Location	4.994	1,272.70	150	150-Mph-Front-Range, Karnataka, Mysore, India
204	29-27-20.00, 75-59-50	Location	16.474	1,284.57	150	150-Mph-Front-Range, Karnataka, Mysore, India
205	29-27-20.00, 75-59-50	Location	24.576	1,284.40	150	150-Mph-Front-Range, Karnataka, Mysore, India
206	29-27-20.00, 75-59-50	Location	40.000	1,321.70	150	150-Mph-Front-Range, Karnataka, Mysore, India
207	29-27-20.00, 75-59-50	Location	12.154	1,325.40	150	150-Mph-Front-Range, Karnataka, Mysore, India
208	29-27-20.00, 75-59-50	Location	0	1,340.20	150	150-Mph-Front-Range, Karnataka, Mysore, India

### Automated Alerts & Reports :

- Shipment Start & End.
- Stoppage/Stops with the actual time duration.
- Excise Route Deviation.
- Shipment status at any time.
- Actual Transit time/distance vs. Estimated Transit time/distance.
- Detention Report.
- View all Vehicles together.
- View all active/completed trips.
- Export to any spreadsheet or ERP for further analysis.

## Implementation Process

**GPS Asset Tracker with 7-24 days battery life is sent with the Vehicle**

Specific "Trip" is created & the Vehicle is tracked on an online system & required reports & alerts generated

Once reaching the destination, the GPS Asset Tracker device is taken out of the vehicle & returned to the Origin via courier

The same device is then used for another trip after due charging.

**A Control Room is established at the Seller Premises with Manpower that is responsible for all logistics, reporting & action.**

Database is maintained for the Device/Vehicle No./Driver/Contact Details/Transporter Details/etc. for immediate & future analytical use

**GTI Infotel Pvt. Ltd.**

A-51 Sector 8, Noida, UP 201301 (India)

Web: <http://www.gtiinfotel.com>

Email: [info@gtiinfotel.com](mailto:info@gtiinfotel.com)

Phone: +91-120-4273656, +91-97167-06167

